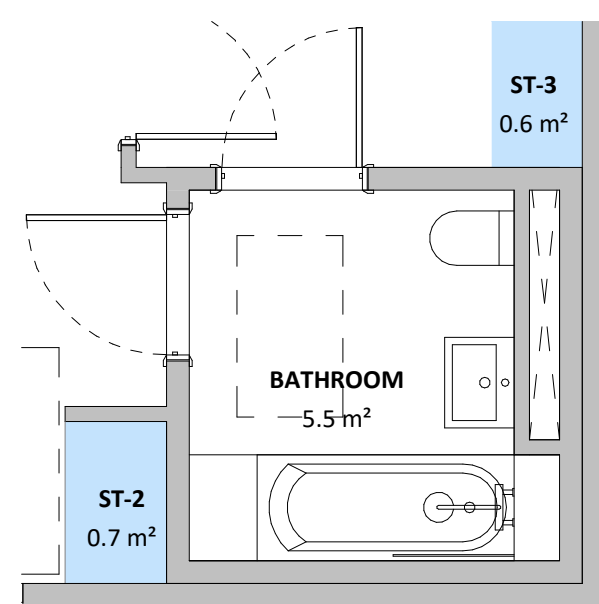
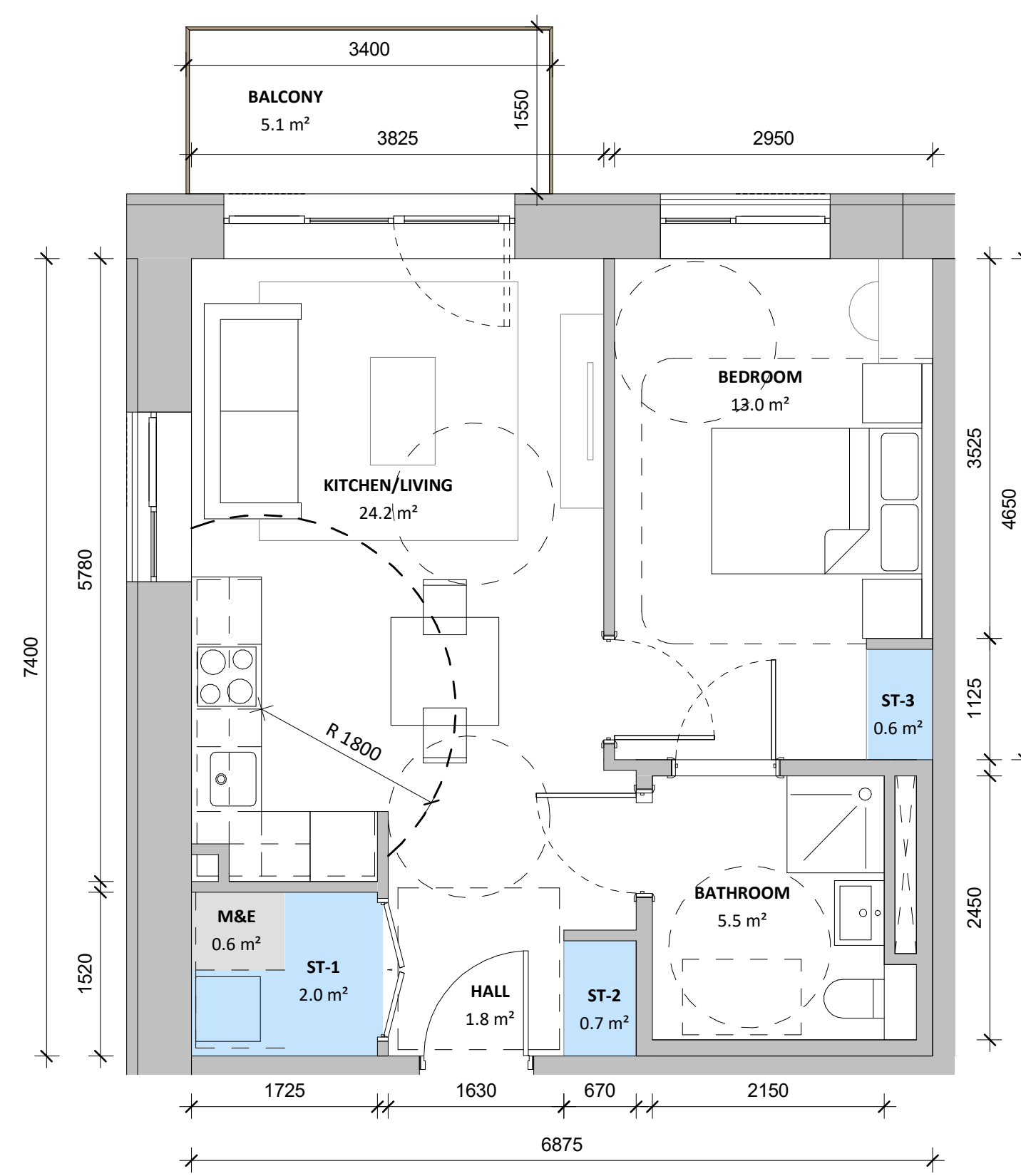
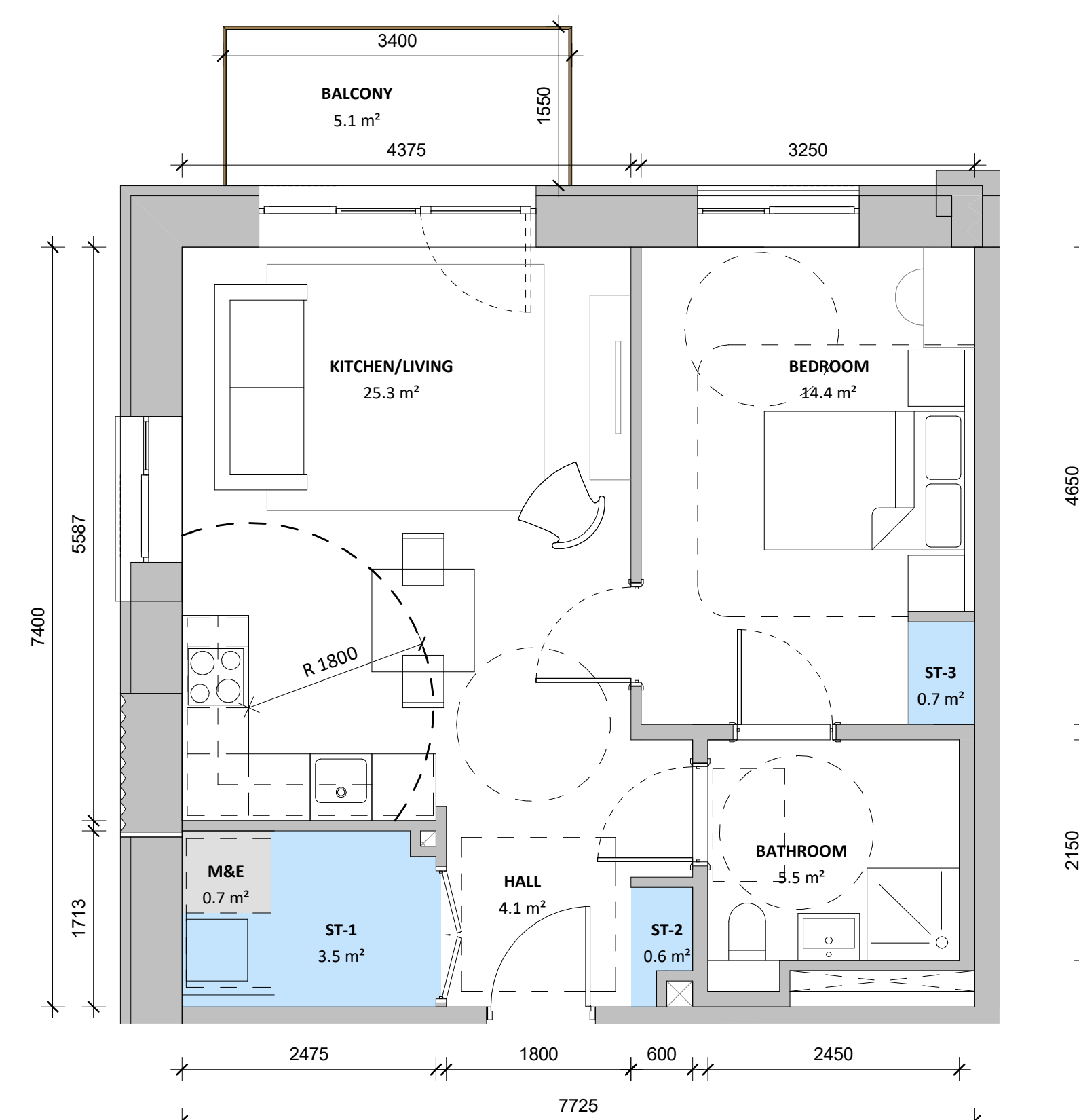


APARTMENT TYPE - 1B2P_01		
NAME	AREA ACHIEVED (m²)	AREA REQUIRED (m²)
APARTMENT FLOOR AREA	49.2 m²	45.0 m²
BATHROOM	4.2 m²	
BEDROOM	11.8 m²	11.4 m²
HALL	2.7 m²	
KITCHEN/LIVING	23.4 m²	23.0 m²
M&E	0.7 m²	
ST-1	3.4 m²	
ST-2	1.7 m²	
AGGREGATE STORAGE	5.1 m²	3.0 m²

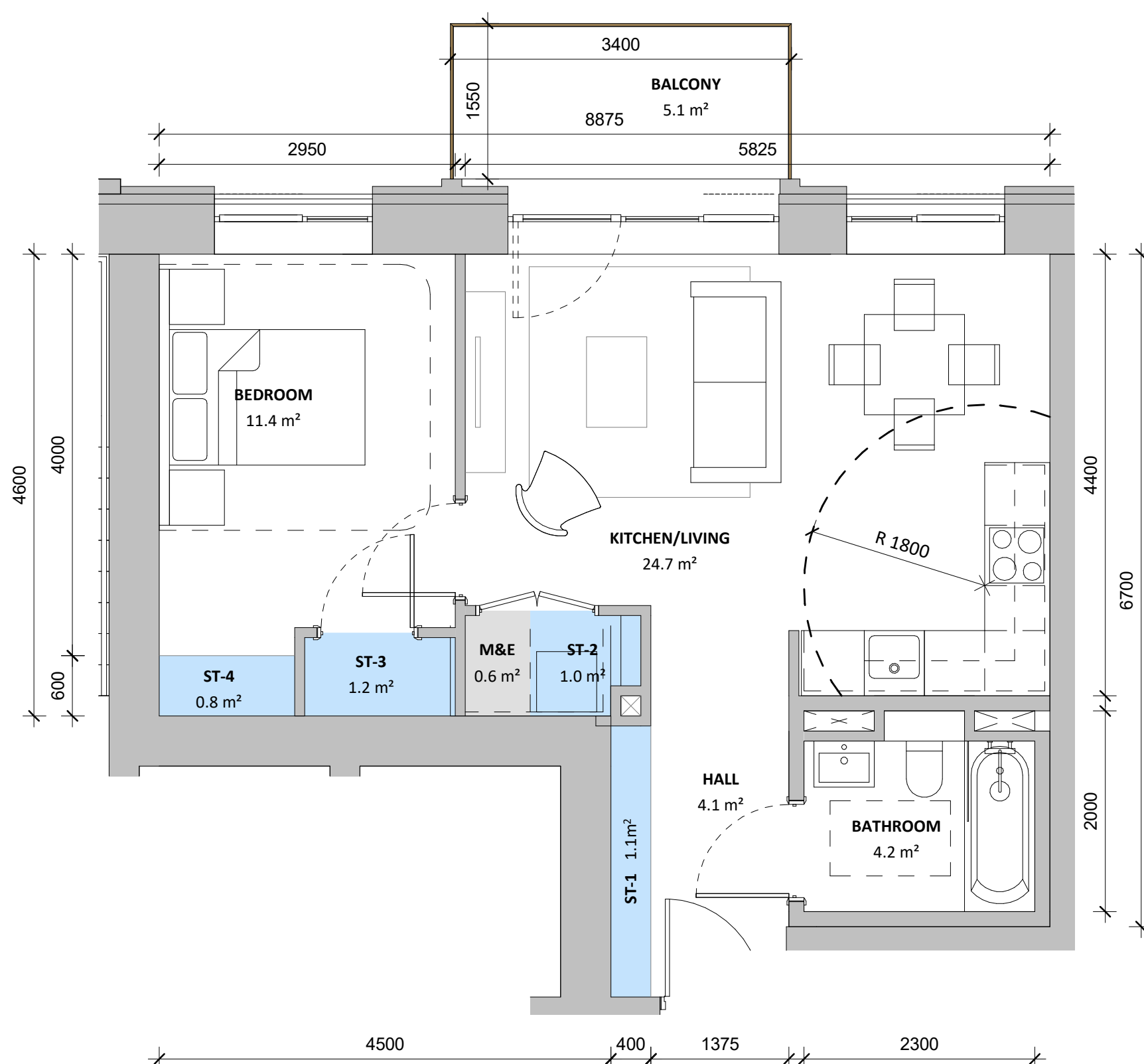


Alternative bathroom layout for none  
Universal Design Units

APARTMENT TYPE - 1B2P_02 (UD)		
NAME	AREA ACHIEVED (m²)	AREA REQUIRED (m²)
APARTMENT FLOOR AREA	50.5 m²	45.0 m²
BATHROOM	5.5 m²	
BEDROOM	13.0 m²	13.0 m²
HALL	1.8 m²	
KITCHEN/LIVING	24.2 m²	23.0 m²
M&E	0.6 m²	
ST-1	2.0 m²	
ST-2	0.7 m²	
ST-3	0.6 m²	
AGGREGATE STORAGE	3.3 m²	3.0 m²

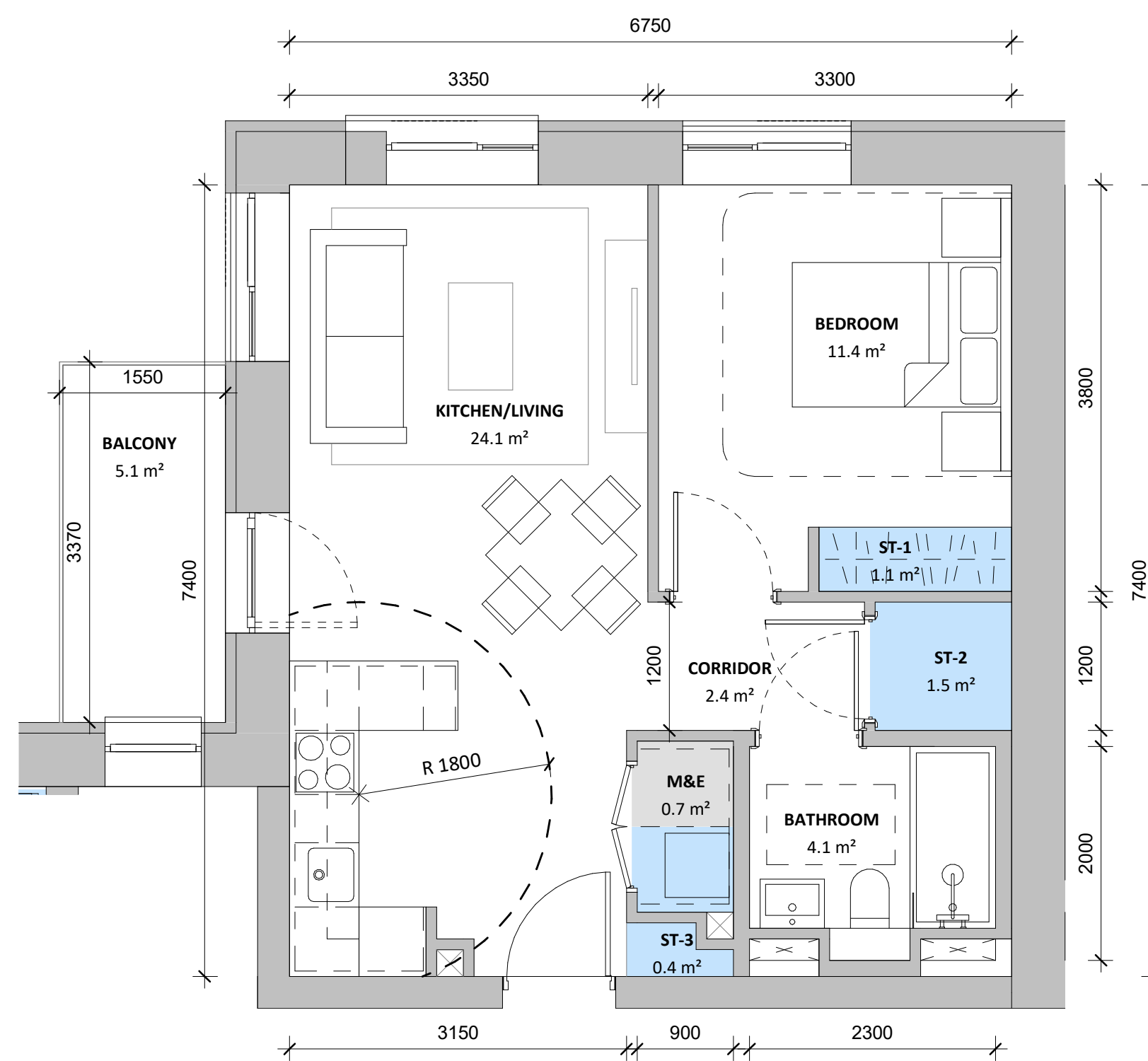


APARTMENT TYPE - 1B2P_03 (UD)		
NAME	AREA ACHIEVED (m²)	AREA REQUIRED (m²)
APARTMENT FLOOR AREA	56.5 m²	45.0 m²
BATHROOM	5.5 m²	
BEDROOM	14.4 m²	13.0 m²
HALL	4.1 m²	
KITCHEN/LIVING	25.3 m²	23.0 m²
M&E	0.7 m²	
ST-1	3.5 m²	
ST-2	0.6 m²	
ST-3	0.7 m²	
AGGREGATE STORAGE	4.7 m²	3.0 m²



APARTMENT TYPE - 1B2P_04		
NAME	AREA ACHIEVED (m²)	AREA REQUIRED (m²)
APARTMENT FLOOR AREA	50.8 m²	45.0 m²
BATHROOM	4.2 m²	
BEDROOM	11.4 m²	11.4 m²
HALL	4.1 m²	
KITCHEN/LIVING	24.7 m²	23.0 m²
M&E	0.6 m²	
ST-1	1.1 m²	
ST-2	1.0 m²	
ST-3	1.2 m²	
ST-4	0.8 m²	
AGGREGATE STORAGE	4.1 m²	3.0 m²

APARTMENT TYPE - 1B2P_05		
NAME	AREA ACHIEVED (m²)	AREA REQUIRED (m²)
APARTMENT FLOOR AREA	48.5 m²	45.0 m²
BATHROOM	4.1 m²	
BEDROOM	11.4 m²	11.4 m²
CORRIDOR	2.4 m²	
KITCHEN/LIVING	24.1 m²	23.0 m²
M&E	0.7 m²	
ST-1	1.1 m²	
ST-2	1.5 m²	
ST-3	0.4 m²	
ST-4	0.7 m²	
AGGREGATE STORAGE	3.7 m²	3.0 m²





All dimensions to be checked on site. Figured dimensions take preference over scaled dimensions. Any errors or discrepancies to be reported to the Architects. This drawing may not be edited or modified by the recipient.

Copyright and ownership of this drawing is vested in RKD Architects, whose prior written consent is required for its use, reproduction or for publication to any third party. All rights reserved by the law of copyright and by international copyright conventions are reserved to RKD Architects and may be protected by court proceedings for damages and/or injunctions and costs.  
RKD Architects' Quality Management Systems are certified to ISO 9001:2015.

**Note**

LEGEND

 M&E

 Storage

NOTE: Unit orientation varies depending on location, refer to GA Floor Plans A1100-A1109.

NOTE: Size and location of private outdoor space varies depending on unit location, refer to GA Floor Plans A1100-A1109

NOTE: Refer to Housing Quality Assessment A2000-A2003 for details on each unit.

NOTE: Based on "Sustainable Urban Housing: Design Standards for New Apartments, December 2022"

NOTE: Storage areas within bedrooms contributing towards storage totals are marked in blue and are excluded from bedroom area calculations

NOTE: Universal Design (UD) Units have been designed according to the "Universal Design Guidelines for Homes in Ireland, 2015"

[illegible]

P5	27/01/2023	ISSUED FOR PLANNING
P4	13/01/2023	ISSUED FOR PRE-PLANNING
P3	06/10/2022	ISSUED FOR PRE-PLANNING
P2	09/09/2022	ISSUED FOR PRE-PLANNING
P1	25/08/2022	ISSUED FOR PRE-PLANNING
<b>Rev.</b>	<b>Date</b>	<b>Description</b>

MALKEY LIMITED

STATUS	PLANNING
--------	----------

PROJECT	158A RICHMOND ROAD
---------	--------------------

PROJECT ADDRESS	158A RICHMOND ROAD DUBLIN 3
-----------------	--------------------------------

DWG TITLE **APARTMENT TYPES - SHEET**  
**1 OF 3**

REV.	STATUS	PROJECT NO.		22001
P5	A3	SCALE		1 : 50
DATE	JAN 2023	DRN	JB	CHK HB

**RKD**

59 Northumberland Rd  
Ballsbridge, Dublin 4  
D04 WP89, Ireland