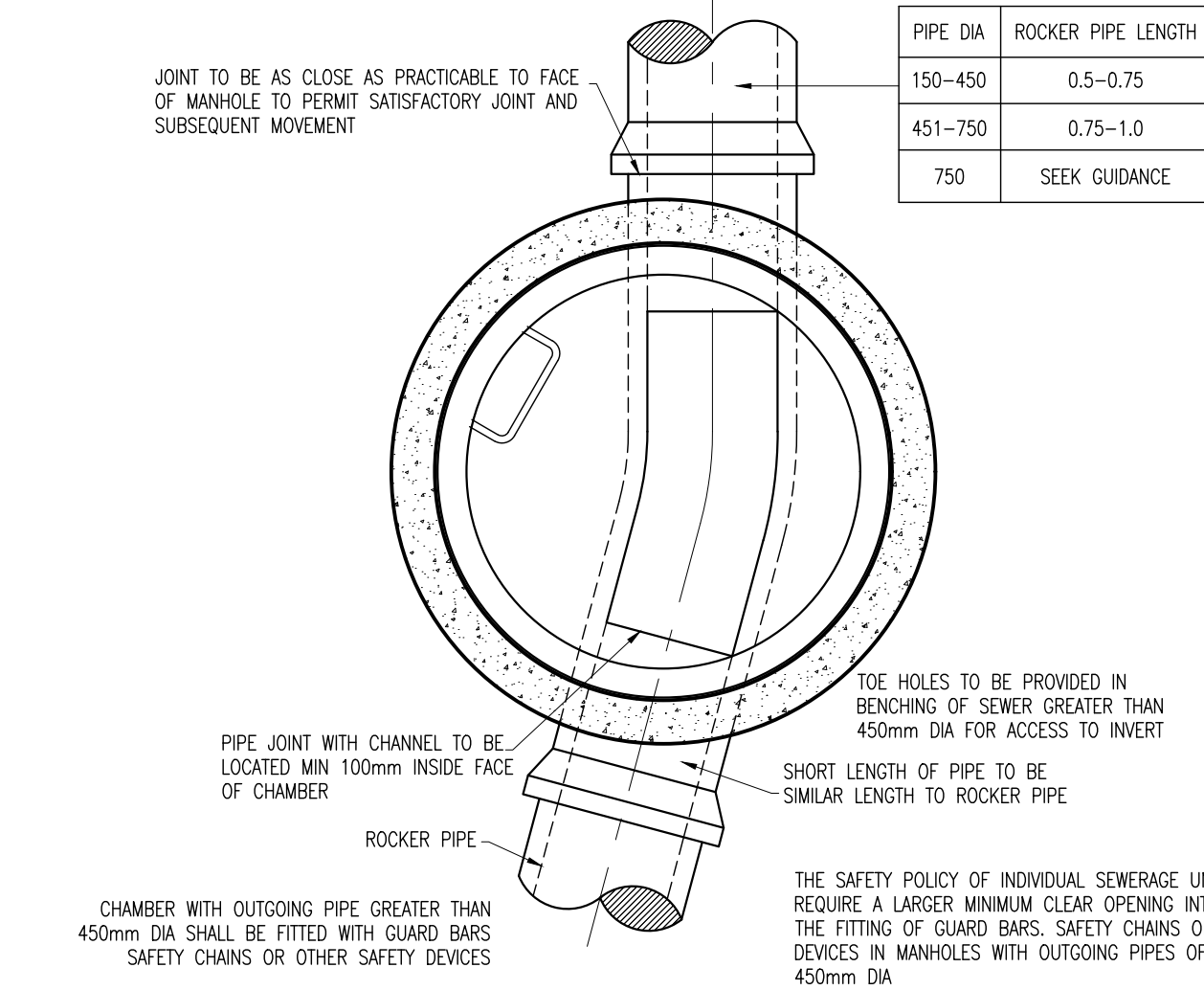
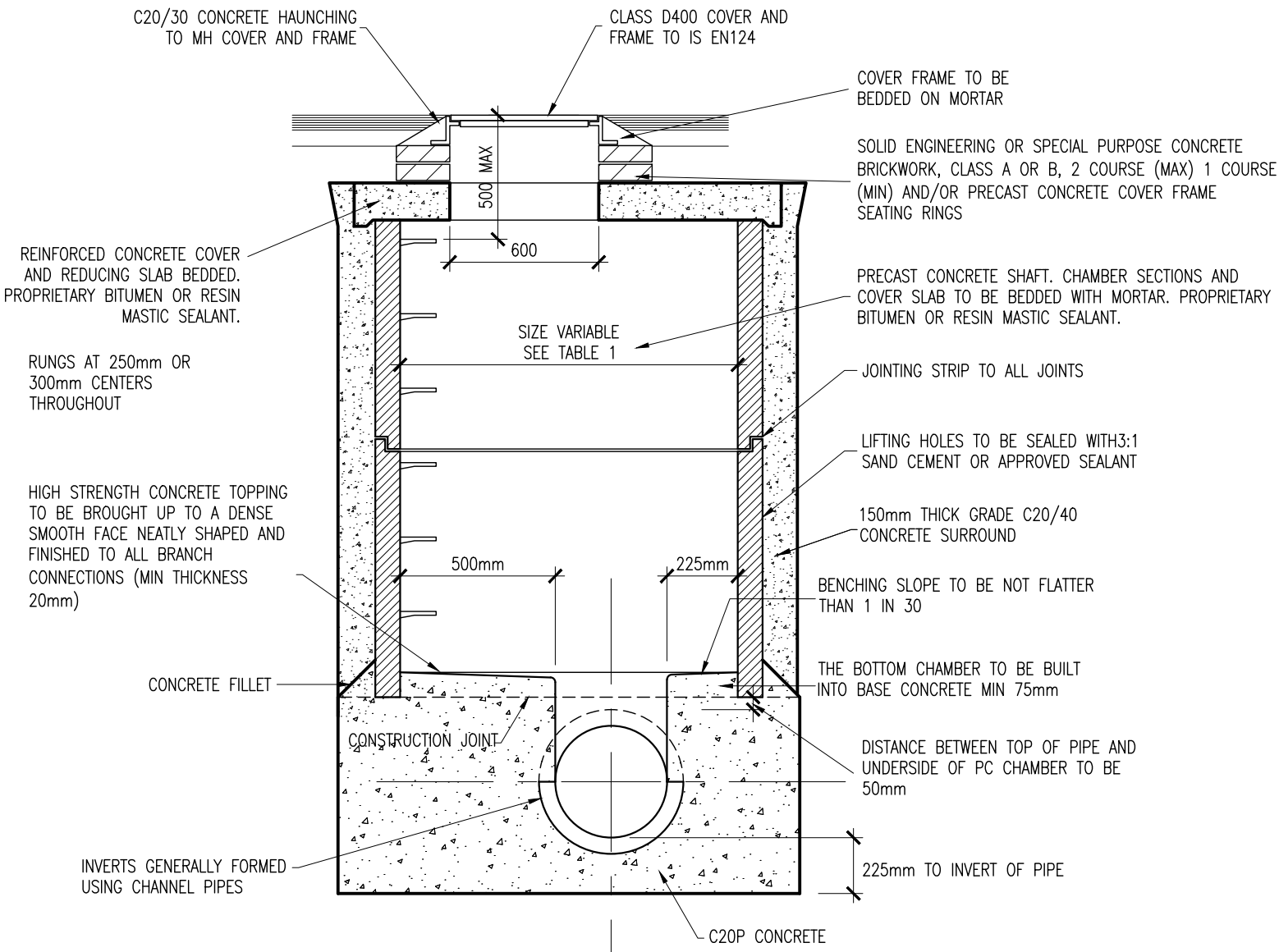


| DIAMETER OF LARGEST PIPE IN MANHOLE (mm) | CHAMBER SECTION DIAMETER (mm) |
|--|-------------------------------|
| LESS THAN 375 | 1200 |
| 375 - 450 | 1350 |
| 500 - 700 | 1500 |
| 750 - 900 | 1800 |
| > 750 | PIPE SIZE + 1.3m |

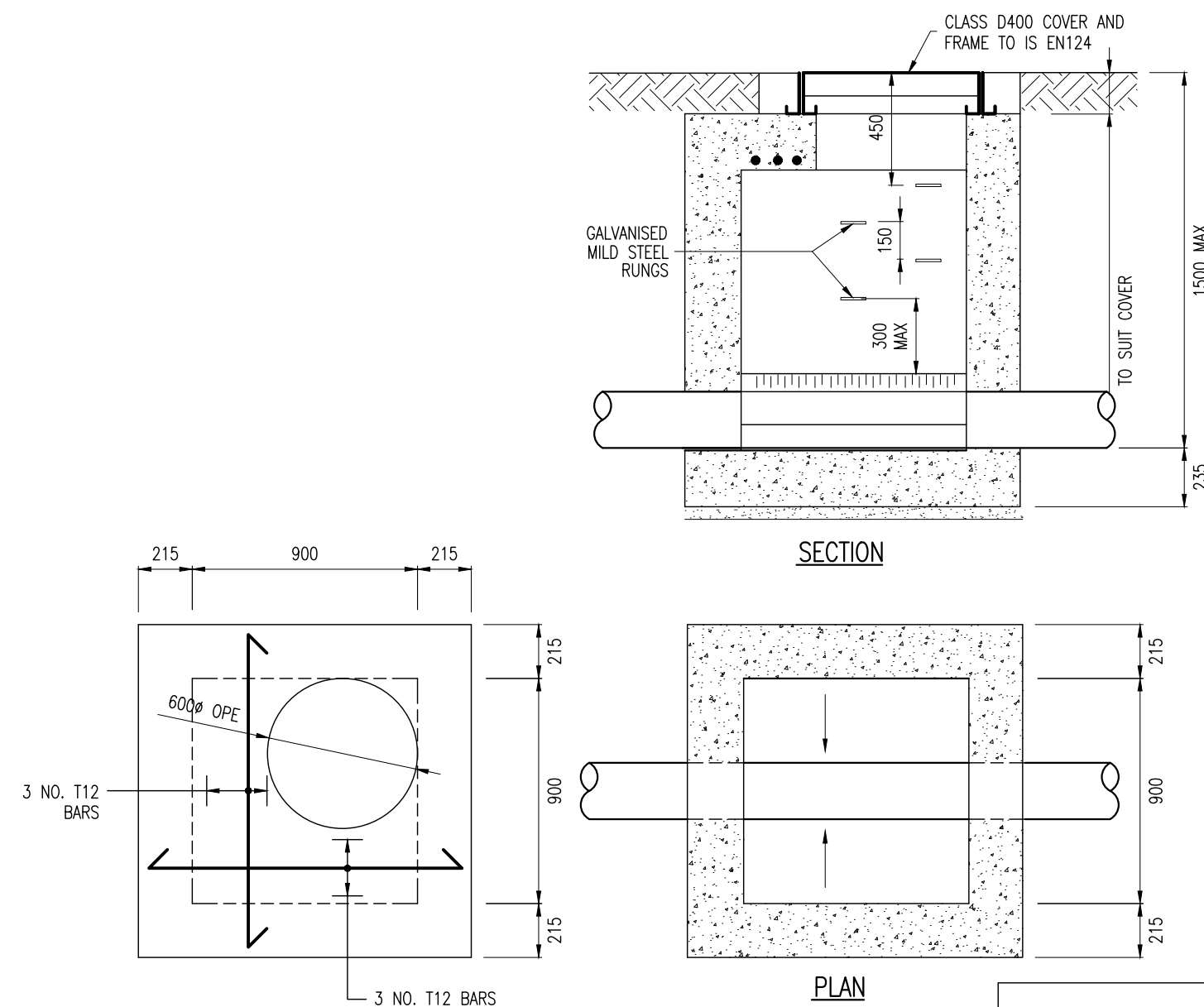
TABLE 1

DETAIL 1A



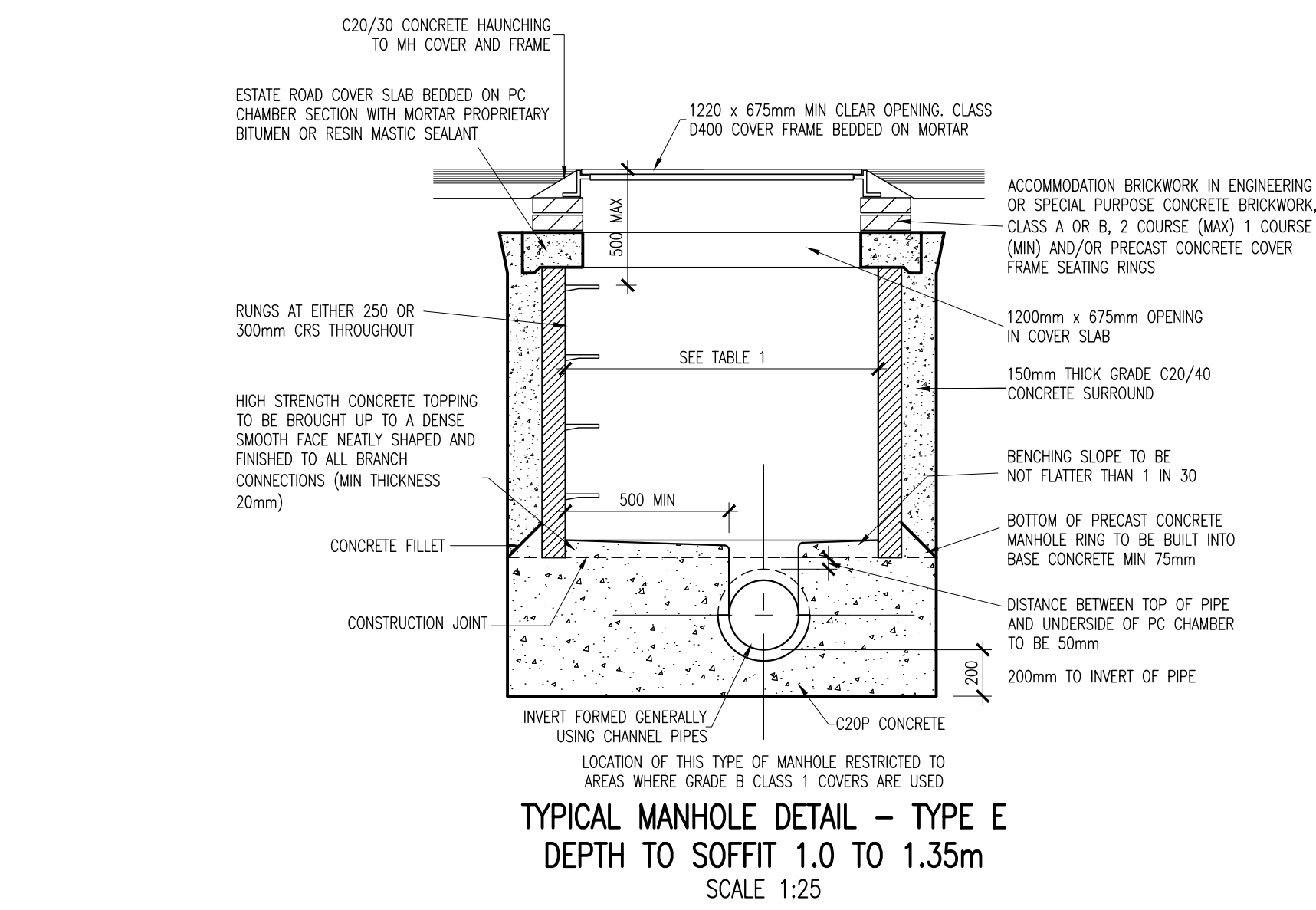
TYPICAL MANHOLE DETAIL – TYPE J
DEPTH TO SOFFIT 1.35 TO 3m
SCALE 1:25

DETAIL 1B



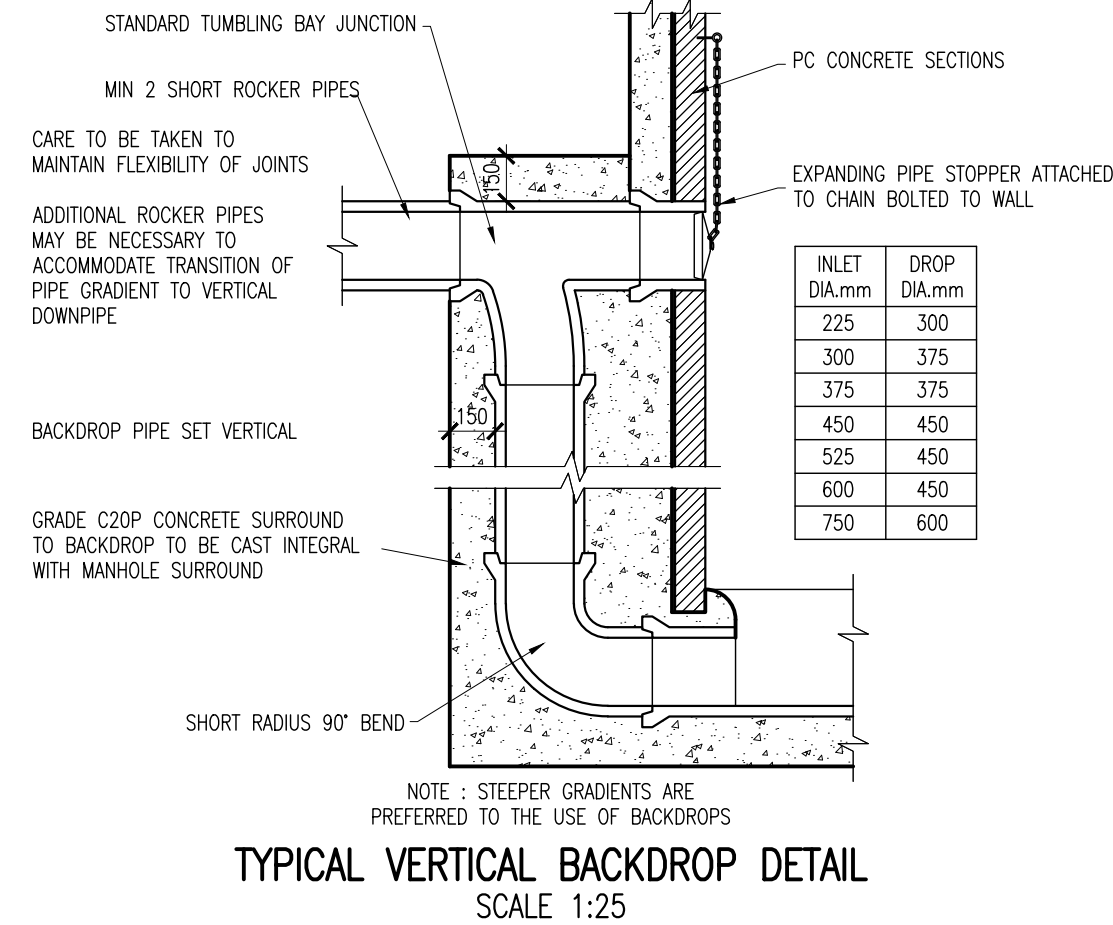
TYPICAL INSITU SHALLOW MANHOLE DETAIL
SCALE 1:25

DETAIL 1C

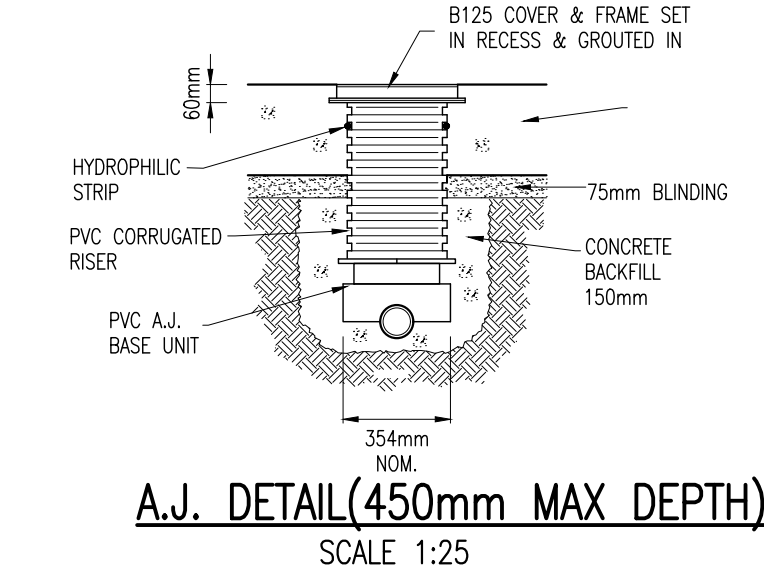


TYPICAL MANHOLE DETAIL – TYPE E
DEPTH TO SOFFIT 1.0 TO 1.35m
SCALE 1:25

DETAIL 1D

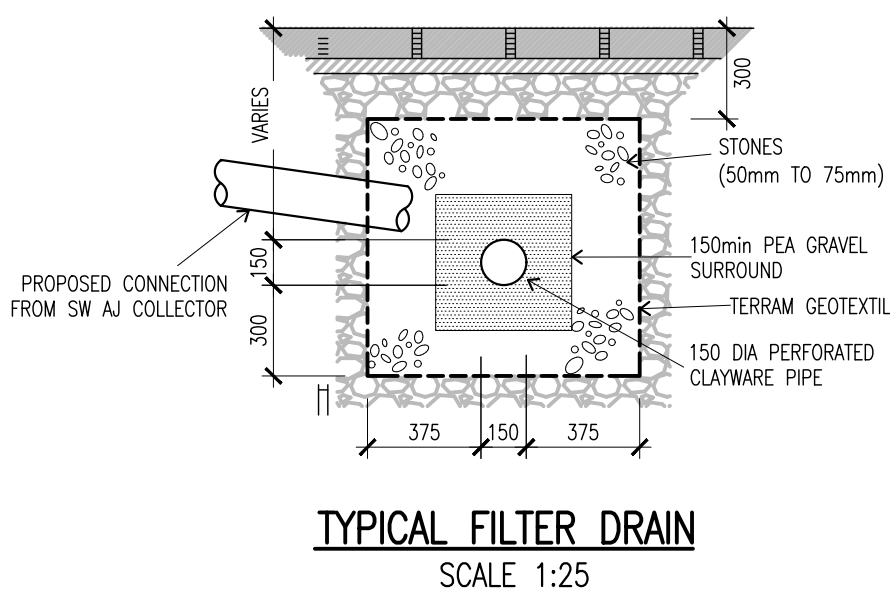


DETAIL 1E



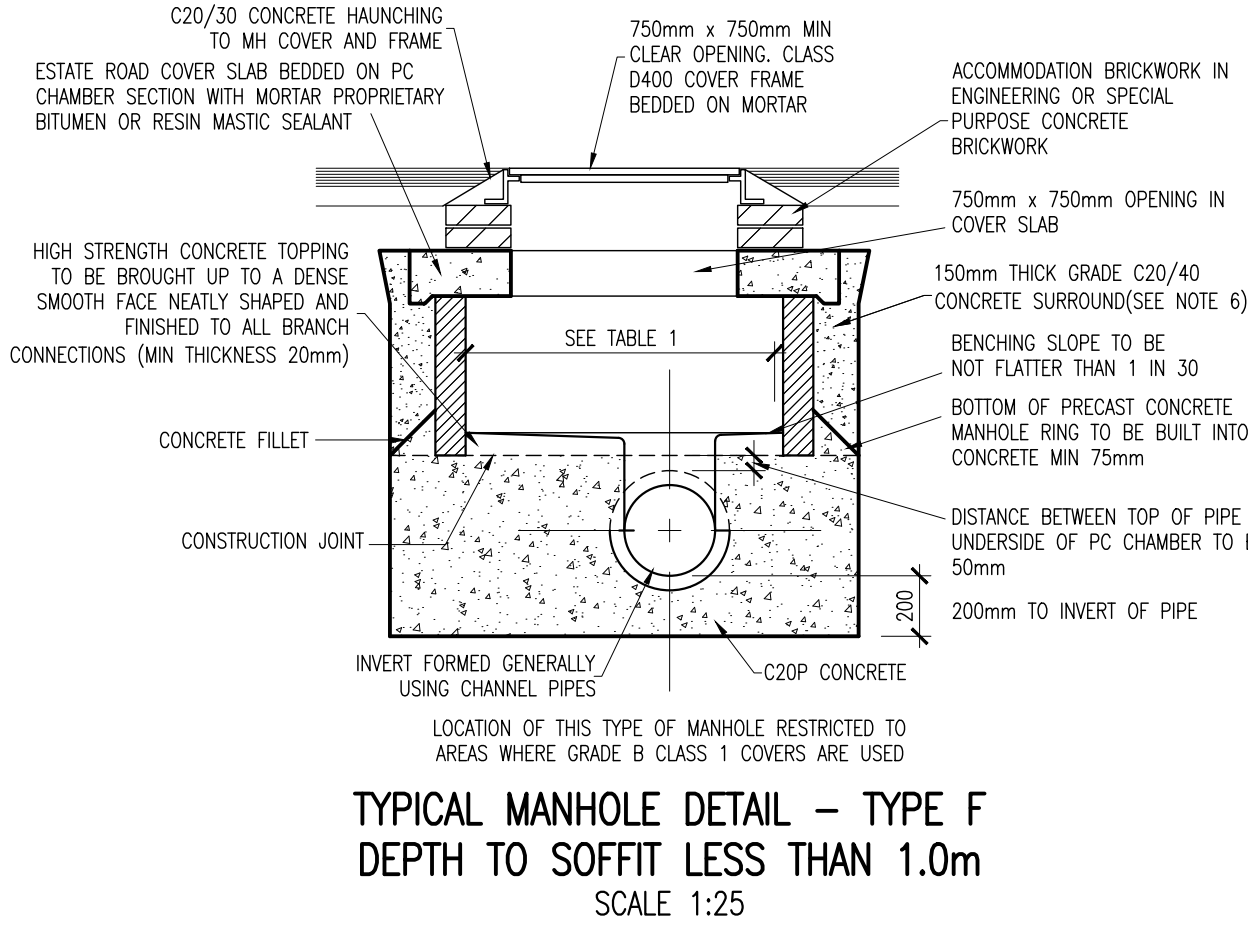
INSPECTION CHAMBER(1200mm MAX DEPTH)
SCALE 1:25

DETAIL 1F



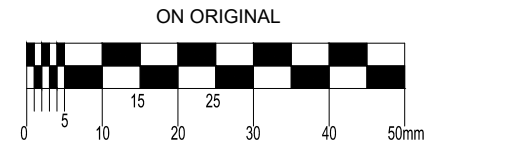
TYPICAL FILTER DRAIN
SCALE 1:25

DETAIL 1G



TYPICAL MANHOLE DETAIL – TYPE F
DEPTH TO SOFFIT LESS THAN 1.0m
SCALE 1:25

DETAIL 1H



© COPYRIGHT OF THIS DRAWING IS RESERVED BY DBFL CONSULTING ENGINEERS. NO PART SHALL BE REPRODUCED OR TRANSMITTED WITHOUT THEIR WRITTEN PERMISSION.

NO CHANGES OF WHATSOEVER NATURE ARE TO BE MADE TO ANY DETAILS SET OUT OR CONTAINED IN ANY DBFL SPECIFICATIONS OR DRAWINGS UNLESS THE EXPRESS CONSENT HAS BEEN OBTAINED IN ADVANCE, IN WRITING, FROM DBFL.

NOTES:

- ALL WORKS TO BE CONSTRUCTED IN ACCORDANCE WITH NRA SPECIFICATION FOR ROADWORKS UNLESS OVERIDDEN BY GREATER DUBLIN REGIONAL CODES OF PRACTICE FOR DRAINAGE WORKS AS AMENDED BY DUBLIN CITY COUNCIL.
- ALL DRAWINGS TO BE CHECKED BY CONTRACTOR ON SITE AND ENGINEER INFORMED OF DISCREPANCIES BEFORE WORK COMMENCES.
- ALL LEVELS ARE IN METRES AND ARE RELATED TO THE ORDINANCE DATUM.
- CONTRACTOR SHALL SATISFY HIMSELF AS TO THE ACCURACY OF PAVEMENT LEVELS ON SITE PRIOR TO COMMENCEMENT OF WORKS.
- ALL SURFACE WATER MANHOLES TO BE TAKEN IN CHARGE BY DCC TO BE BLOCKWORK OR IN SITU CONCRETE AS PER THE GREATER DUBLIN REGIONAL CODES OF PRACTICE FOR DRAINAGE WORKS AS AMENDED BY DUBLIN CITY COUNCIL.
- ALL FOUL MANHOLES TO BE CONSTRUCTED IN ACCORDANCE WITH IRISH WATER'S CODE OF PRACTICE FOR WASTEWATER INFRASTRUCTURE.
- ALL MANHOLES TO BE RETAINED IN PRIVATE OWNERSHIP TO BE PRE-CAST CONCRETE MANHOLES AS PER DRAINAGE DESIGN DETAILS.

| | | | | |
|-----|----------|---------------------|-----|-------|
| P02 | 24-02-23 | ISSUED FOR PLANNING | DKE | DCB |
| P01 | 07-10-22 | ISSUED FOR PLANNING | DKE | DCB |
| rev | date | description | by | chkd. |

client approval A - Approved B - Approved with comments C - Do not use

suitability S2 - INFORMATION issue purpose PLANNING

DBFL Consulting Engineers Civil, Structural & Transportation Engineering www.dbfl.ie

DUBLIN OFFICE: 01-454 4000, 14 South Mall, Cork, T12 CT91, CORK OFFICE: 021 491 1000, 14 South Mall, Cork, T12 CT91, WATERFORD OFFICE: 051 931 204538, 14 South Mall, Cork, T12 CT91, WATERFORD OFFICE: 051 931 204538, 14 South Mall, Cork, T12 CT91

project ref. RICHMOND ROAD PHASE II

drawing title TYPICAL DRAINAGE DETAILS - SHEET 1

client MALKEY LIMITED

designed by DCB author DKE scale AS SHOWN sheet size A1

drawing no. 210178-DBFL-CS-SP-DR-C-5301 revision P02