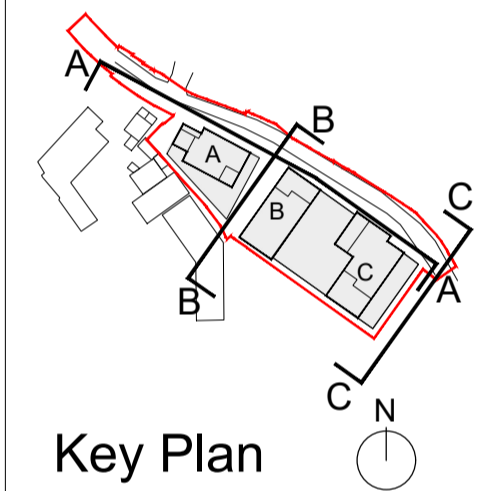


Copyright and ownership of this drawing is vested in RKD Architects, whose prior written consent is required for its use, reproduction or for publication to any third party. All rights reserved by the law of copyright and by international copyright conventions are reserved for RKD Architects and may be protected by court proceedings for damages and/or injunctions and costs.
RKD Architects' Quality Management Systems are certified to ISO 9001:2015.

Notes:
ALL LEVELS ARE SHOWN TO THE IRISH TRANSVERSE MERCATOR (ITM) AND ARE DISPLAYED IN METRES (m)
ALL LEVELS SHOWN RELATES TO THE MALIN HEAD DATUM
ALL DIMENSIONS SHOWN ARE IN MILLIMETRES

LEGEND

— SITE APPLICATION AREA
SITE DEVELOPMENT AREA = 0.55 ha



P2	27/01/2023	ISSUED FOR PLANNING
P1	13/01/2023	ISSUED FOR PRE-PLANNING
Rev.	Date	Description

MALKEY LIMITED

STATUS **PLANNING**

PROJECT **158A RICHMOND ROAD**

PROJECT ADDRESS **158A RICHMOND ROAD DUBLIN 3**

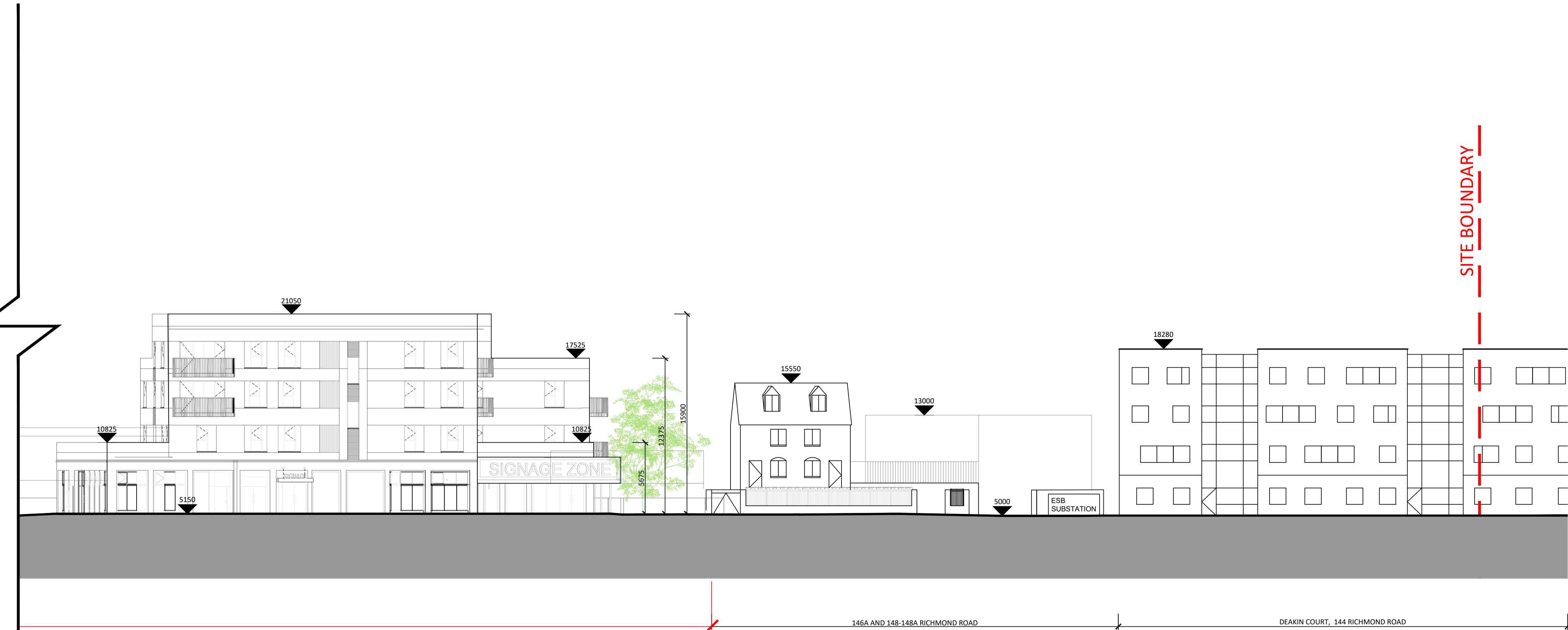
DWG TITLE **CONTEXTUAL ELEVATIONS SHEET 2 OF 4**

DWG NO. **22001-RKD-ZZ-ZZ-DR-A-1304B**

REV.	STATUS	PROJECT NO.
P2	A3	22001
DATE	JAN 2023	SCALE
		1 : 200
DRN	JB	CHK
		HB



1 1304B_Proposed Contextual North East Elevation Along Richmond Road_A-A - SCENARIO B
1 : 200



2 1304B_Proposed Contextual North East Elevation Along Richmond Road_A-A - SCENARIO B
1 : 200