

All dimensions to be checked on site. Figured dimensions take preference over scaled dimensions. Any errors or discrepancies to be reported to the Architects. This drawing may not be edited or modified by the recipient.

A1

Copyright and ownership of this drawing is vested in RKD Architects, whose prior written consent is required for its use, reproduction or for publication to any third party. All rights reserved by the law of copyright and by international copyright conventions are reserved to RKD Architects and may be protected by court proceedings for damages and/or injunctions and costs. RKD Architects' Quality Management Systems are certified to ISO 9001:2015.

Notes:

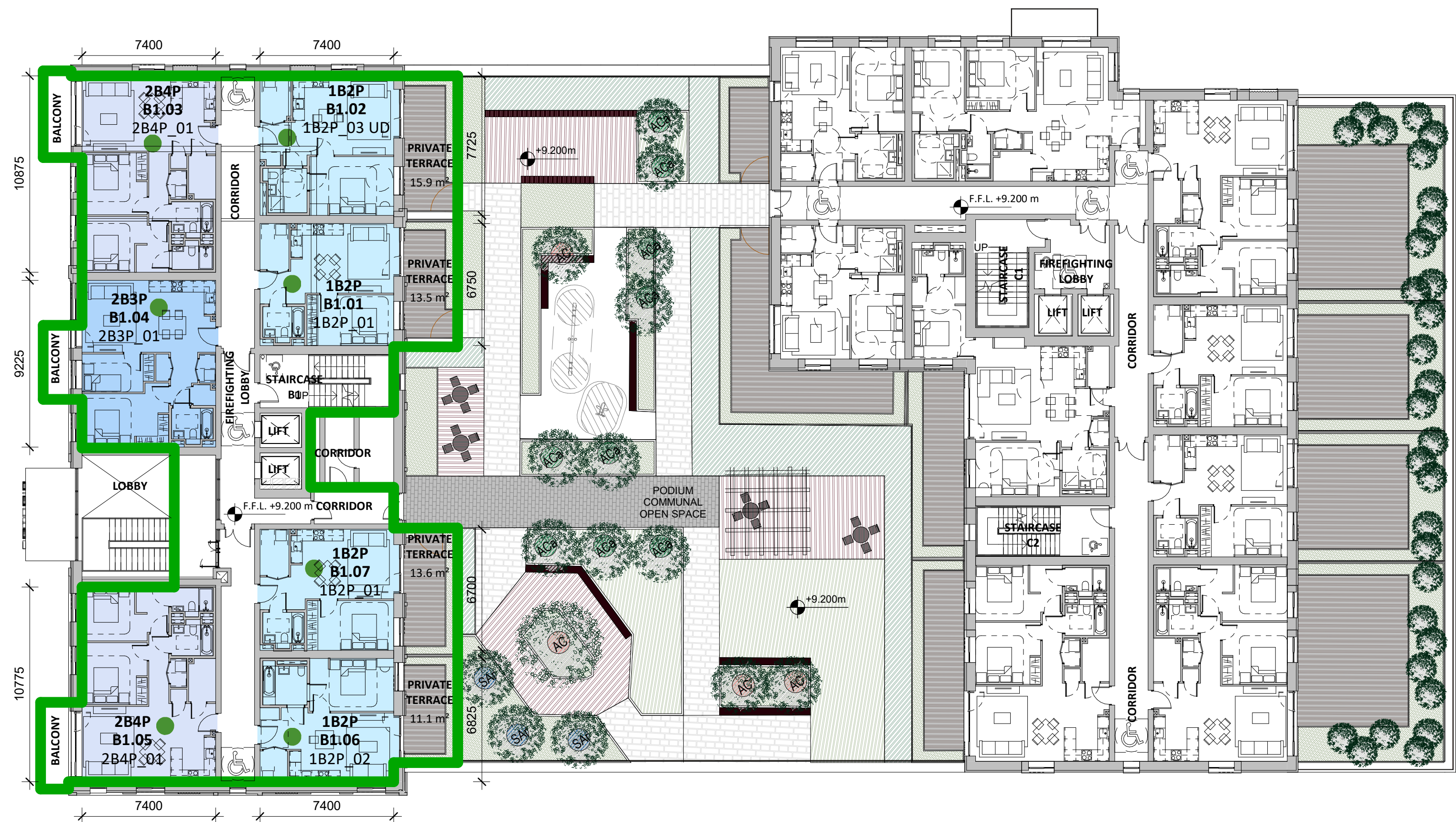
PART V UNITS

- 1B2P Apartment
- 2B3P Apartment
- 2B4P Apartment
- Part V Area
- Part V Unit

Total Part V Units = 27
20.3%

PART V UNIT MIX

Unit Type	Count
1B2P	17
2B3P	2
2B4P	8
TOTAL	27



1 1511_First Floor Plan - Part V Units
1 : 200

P4	27/01/2023	ISSUED FOR PLANNING
P3	13/01/2023	ISSUED FOR PRE-PLANNING
P2	06/10/2022	ISSUED FOR PRE-PLANNING
P1	09/09/2022	ISSUED FOR PRE-PLANNING

Rev.	Date	Description
------	------	-------------

MALKEY LIMITED

STATUS PLANNING

PROJECT 158A RICHMOND ROAD

PROJECT ADDRESS 158A RICHMOND ROAD DUBLIN 3

DWG TITLE PART V HOUSING PLANS - SHEET 1 OF 3

DWG NO. 22001-RKD-ZZ-01-DR-A-1511

REV.	STATUS	PROJECT NO.
P4	P1	22001
DATE	SCALE	1 : 200
JAN 2023	DRN JB	CHK HB

RKD

59 Northumberland Rd
Ballsbridge, Dublin 4
D04 WUPB, Ireland

+353 1 666 1055
mal@rkd.ie
rkd.ie